



Cambridge International AS & A Level

CANDIDATE
NAME

--

CENTRE
NUMBER

--	--	--	--	--

CANDIDATE
NUMBER

--	--	--	--

* 3 2 0 1 7 8 4 6 7 0 *

MATHEMATICS

9709/32

Paper 3 Pure Mathematics 3

February/March 2022

1 hour 50 minutes

You must answer on the question paper.

You will need: List of formulae (MF19)

INSTRUCTIONS

- Answer **all** questions.
- Use a black or dark blue pen. You may use an HB pencil for any diagrams or graphs.
- Write your name, centre number and candidate number in the boxes at the top of the page.
- Write your answer to each question in the space provided.
- Do **not** use an erasable pen or correction fluid.
- Do **not** write on any bar codes.
- If additional space is needed, you should use the lined page at the end of this booklet; the question number or numbers must be clearly shown.
- You should use a calculator where appropriate.
- You must show all necessary working clearly; no marks will be given for unsupported answers from a calculator.
- Give non-exact numerical answers correct to 3 significant figures, or 1 decimal place for angles in degrees, unless a different level of accuracy is specified in the question.

INFORMATION

- The total mark for this paper is 75.
- The number of marks for each question or part question is shown in brackets [].

This document has **20** pages. Any blank pages are indicated.

BLANK PAGE

1 Solve the inequality $|2x + 3| > 3|x + 2|$.

[4]

.....

.....

.....

.....

.....

.....

.....

.....

.....

.....

.....

.....

.....

.....

.....

.....

.....

.....

.....

.....

.....

.....

.....

.....

.....

.....

.....

.....

.....

.....

.....

.....

.....

.....

.....

.....

.....

.....

.....

.....

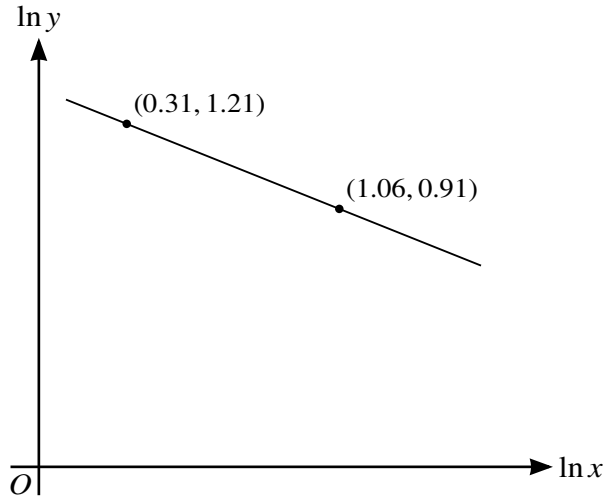
.....

.....

.....

- 2 On a sketch of an Argand diagram, shade the region whose points represent complex numbers z satisfying the inequalities $|z + 2 - 3i| \leq 2$ and $\arg z \leq \frac{3}{4}\pi$. [4]

3



The variables x and y satisfy the equation $x^n y^2 = C$, where n and C are constants. The graph of $\ln y$ against $\ln x$ is a straight line passing through the points $(0.31, 1.21)$ and $(1.06, 0.91)$, as shown in the diagram.

Find the value of n and find the value of C correct to 2 decimal places. [5]

.....

.....

.....

.....

.....

.....

.....

.....

.....

.....

.....

.....

.....

.....

.....

.....

.....

.....

.....

.....

.....

.....

.....

4 The parametric equations of a curve are

$$x = 1 - \cos \theta, \quad y = \cos \theta - \frac{1}{4} \cos 2\theta.$$

Show that $\frac{dy}{dx} = -2 \sin^2\left(\frac{1}{2}\theta\right)$. [5]

.....

.....

.....

.....

.....

.....

.....

.....

.....

.....

.....

.....

.....

.....

.....

.....

.....

.....

.....

.....

.....

.....

.....

5 The angles α and β lie between 0° and 180° and are such that

$$\tan(\alpha + \beta) = 2 \quad \text{and} \quad \tan \alpha = 3 \tan \beta.$$

Find the possible values of α and β .

[6]

.....
.....
.....
.....
.....
.....
.....
.....
.....
.....
.....
.....
.....
.....
.....
.....
.....
.....
.....
.....
.....
.....
.....
.....
.....

- 6 Find the complex numbers w which satisfy the equation $w^2 + 2iw^* = 1$ and are such that $\text{Re } w \leq 0$.
Give your answers in the form $x + iy$, where x and y are real. [6]

.....
.....
.....
.....
.....
.....
.....
.....
.....
.....
.....
.....
.....
.....
.....
.....
.....
.....
.....
.....
.....
.....

7 (a) By sketching a suitable pair of graphs, show that the equation $4 - x^2 = \sec \frac{1}{2}x$ has exactly one root in the interval $0 \leq x < \pi$. [2]

(b) Verify by calculation that this root lies between 1 and 2. [2]

.....

.....

.....

.....

.....

.....

(c) Use the iterative formula $x_{n+1} = \sqrt{4 - \sec \frac{1}{2}x_n}$ to determine the root correct to 2 decimal places. Give the result of each iteration to 4 decimal places. [3]

.....

.....

.....

.....

.....

.....

8 (a) Find the quotient and remainder when $8x^3 + 4x^2 + 2x + 7$ is divided by $4x^2 + 1$. [3]

.....

.....

.....

.....

.....

.....

.....

.....

.....

.....

.....

.....

.....

.....

.....

.....

.....

.....

.....

.....

.....

.....

.....

.....

.....

.....

(b) Hence find the exact value of $\int_0^{\frac{1}{2}} \frac{8x^3 + 4x^2 + 2x + 7}{4x^2 + 1} dx$. [5]

.....

.....

.....

.....

.....

.....

.....

.....

.....

.....

.....

.....

.....

.....

.....

.....

.....

.....

.....

.....

.....

.....

.....

9 The variables x and y satisfy the differential equation

$$(x + 1)(3x + 1) \frac{dy}{dx} = y,$$

and it is given that $y = 1$ when $x = 1$.

Solve the differential equation and find the exact value of y when $x = 3$, giving your answer in a simplified form. [9]

.....

.....

.....

.....

.....

.....

.....

.....

.....

.....

.....

.....

.....

.....

.....

.....

.....

.....

.....

.....

.....

.....

.....

.....

.....

.....

A series of 20 horizontal dotted lines for writing.

10 The points A and B have position vectors $2\mathbf{i} + \mathbf{j} + \mathbf{k}$ and $\mathbf{i} - 2\mathbf{j} + 2\mathbf{k}$ respectively. The line l has vector equation $\mathbf{r} = \mathbf{i} + 2\mathbf{j} - 3\mathbf{k} + \mu(\mathbf{i} - 3\mathbf{j} - 2\mathbf{k})$.

(a) Find a vector equation for the line through A and B . [3]

.....

.....

.....

.....

.....

.....

.....

.....

.....

.....

.....

.....

.....

.....

.....

.....

.....

.....

.....

.....

.....

(b) Find the acute angle between the directions of AB and l , giving your answer in degrees. [3]

.....

.....

.....

.....

.....

.....

.....

.....

.....

.....

.....

.....

.....

.....

.....

.....

.....

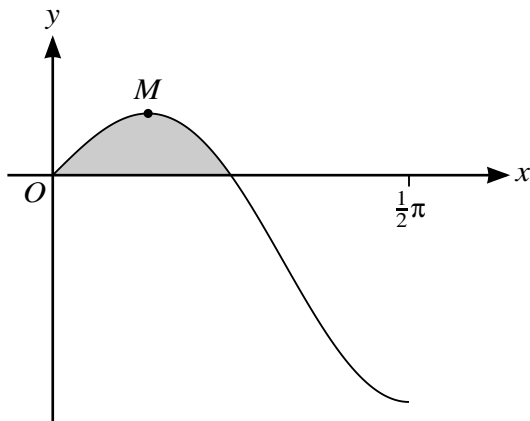
.....

.....

.....

.....

11



The diagram shows the curve $y = \sin x \cos 2x$ for $0 \leq x \leq \frac{1}{2}\pi$, and its maximum point M .

- (a) Find the x -coordinate of M , giving your answer correct to 3 significant figures. [6]

.....

.....

.....

.....

.....

.....

.....

.....

.....

.....

.....

.....

.....

.....

.....

.....

.....

.....

.....

.....

.....

.....

.....

.....

BLANK PAGE

Permission to reproduce items where third-party owned material protected by copyright is included has been sought and cleared where possible. Every reasonable effort has been made by the publisher (UCLES) to trace copyright holders, but if any items requiring clearance have unwittingly been included, the publisher will be pleased to make amends at the earliest possible opportunity.

To avoid the issue of disclosure of answer-related information to candidates, all copyright acknowledgements are reproduced online in the Cambridge Assessment International Education Copyright Acknowledgements Booklet. This is produced for each series of examinations and is freely available to download at www.cambridgeinternational.org after the live examination series.

Cambridge Assessment International Education is part of Cambridge Assessment. Cambridge Assessment is the brand name of the University of Cambridge Local Examinations Syndicate (UCLES), which is a department of the University of Cambridge.